

Stanford Medicine Children's Health Referral Directory



We are pleased to present the *Stanford Medicine Children's Health Referral Directory*, designed to provide the latest information about our physicians, office locations, clinical services, and programs available for you and your patients.



Physician Relations Services
PhysicianRelations@stanfordchildrens.org
(650) 724-9606

As a referring provider, you are a critical part of the care team. We look forward to connecting with you. Please use one of the resources below for more information, based on the nature of your inquiry.

All Other Outpatient Referrals

- Electronically, go to mdportal.stanfordchildrens.org
- Call the Referral Center at (800) 995-5724.
- Fax to (650) 721-2884.

For Urgent Referral Triage

Call our MD-to-MD Consult Line: (800) 995-5724.

Referral forms can be found at:

<https://www.stanfordchildrens.org/en/refer/forms>



Alphabetical Listing of Referral Numbers

SBP | South Bay / Peninsula **SFNB** | San Francisco / North Bay **EB** | East Bay **CC** | Central Coast **CV** | Central Valley

	PHONE	FAX
Adolescent Medicine		
SBP	(800) 995-5724	(650) 721-2884
Allergy / Immunology		
SBP	(800) 995-5724	(650) 721-2884
SFNB	(844) 733-2762	(650) 725-7578
Audiology		
SBP	(800) 995-5724	(650) 721-2884
Biofeedback		
SFNB	(844) 733-2762	(650) 725-7578
Cardiology		
<i>Palo Alto</i>	(800) 995-5724	(650) 721-2884
<i>South Bay / Los Gatos</i>	(408) 448-2817	(408) 448-4807
SFNB	(844) 733-2762	(650) 725-7578
EB	(925) 295-1701	(925) 295-1704
CC	(831) 757-7722	(831) 757-7733
Complex Primary Care Clinic		
SBP	(800) 995-5724	(650) 721-2884
Dermatology		
SBP	(800) 995-5724	(650) 721-2884
EB	(925) 263-5794	(925) 263-5795
Development and Behavior		
SBP	(800) 995-5724	(650) 721-2884
CC	(800) 995-5724	(650) 721-2884
EB	(925) 263-5794	(925) 263-5795
Eating Disorders		
SBP	(650) 723-5511	(650) 497-4246

	PHONE	FAX
Endocrinology / Diabetes		
SBP	(800) 995-5724	(650) 721-2884
CC	(800) 995-5724	(650) 721-2884
SFNB	(844) 733-2762	(650) 725-7578
EB	(925) 263-5794	(925) 263-5795
Gastroenterology, Hepatology and Nutrition		
<i>South Bay / Palo Alto / Capitola</i>	(800) 995-5724	(650) 721-2884
<i>Specialty Services - Los Gatos</i>	(800) 995-5724	(650) 721-2884
<i>Pediatric Gastroenterology - Los Gatos</i>	(408) 358-3573	(408) 356-2888
SFNB	(844) 733-2762	(650) 725-7578
EB	(925) 263-5794	(925) 263-5795
<i>Monterey</i>	(831) 375-1000	(831) 655-1548
General Surgery		
SBP	(800) 995-5724	(650) 721-2884
SFNB	(844) 733-2762	(650) 725-7578
EB	(925) 263-5794	(925) 263-5795
Genetics		
SBP	(800) 995-5724	(650) 721-2884
SFNB	(844) 733-2762	(650) 725-7578
EB	(925) 263-5794	(925) 263-5795
Gynecology		
SBP	(800) 995-5724	(650) 721-2884
Hand		
SBP	(844) 416-7846	(650) 721-2884
EB	(844) 416-7846	(925) 263-5795
Heart Transplant		
SBP	(800) 995-5724	(650) 721-2884

Alphabetical Listing of Referral Numbers

SBP | South Bay/Peninsula **SFNB** | San Francisco/North Bay **EB** | East Bay **CC** | Central Coast **CV** | Central Valley

	PHONE	FAX
Hematology		
SBP	(800) 995-5724	(650) 721-2884
CC	(800) 995-5724	(650) 721-2884
SFNB	(844) 733-2762	(650) 725-7578
EB	(925) 941-4144	(925) 947-3208
Immune Behavioral Health (PANS)		
SBP	(800) 995-5724	(650) 721-2884
Infectious Disease		
SBP	(800) 995-5724	(650) 721-2884
SFNB	(844) 733-2762	(650) 725-7578
EB	(925) 263-5794	(925) 263-5795
Intestinal Transplant		
SBP	(650) 725-8771	(650) 736-7857
Kidney Transplant		
SBP	(650) 724-8236	(650) 723-4312
Liver Transplant		
SBP	(650) 725-8771	(650) 736-7857
Lung and Heart-Lung Transplant		
SBP	(650) 498-2568	(650) 723-4312
Motion and Sports Performance Lab		
SBP	(800) 995-5724	(650) 721-2884
Nephrology		
SBP	(800) 995-5724	(650) 721-2884
SFNB	(844) 733-2762	(650) 725-7578
EB	(925) 263-5794	(925) 263-5795
Neurology		
SBP	(800) 995-5724	(650) 721-2884
CC	(800) 995-5724	(650) 721-2884
SFNB	(844) 733-2762	(650) 725-7578
EB	(925) 263-5794	(925) 263-5795

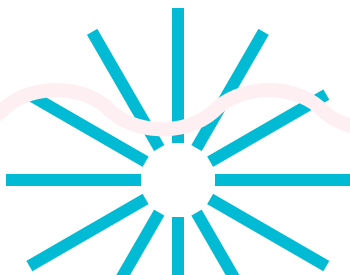
	PHONE	FAX
Neuro-Oncology		
SBP	(800) 995-5724	(650) 721-2884
Neurosurgery		
SBP	(800) 995-5724	(650) 721-2884
SFNB	(844) 733-2762	(650) 725-7578
EB	(925) 263-5794	(925) 263-5795
Nutrition		
SBP	(800) 995-5724	(650) 721-2884
Obstetrics		
<i>Welch Road, Palo Alto</i>		
	(800) 995-5724	(650) 725-2062
<i>Quarry Road, Palo Alto</i>		
	(650) 721-6060	(650) 366-6070
<i>Mountain View</i>		
	(650) 988-7470	(650) 725-7253
<i>Redwood City</i>		
	(650) 366-5594	(650) 366-6352
Oncology		
SBP	(800) 995-5724	(650) 721-1086
SFNB	(844) 733-2762	(650) 725-7578
EB	(925) 941-4144	(925) 947-3208
Ophthalmology		
SBP	(800) 995-5724	(650) 721-2884
Orthopedics		
SBP	(844) 416-7846	(650) 721-2884
SFNB	(844) 733-2762	(650) 725-7578
EB	(844) 416-7846	(925) 263-5795
Otolaryngology (ENT)		
SBP	(800) 995-5724	(650) 721-2884
EB	(925) 263-5794	(925) 263-5795

Alphabetical Listing of Referral Numbers

SBP | South Bay/Peninsula **SFNB** | San Francisco/North Bay **EB** | East Bay **CC** | Central Coast **CV** | Central Valley

	PHONE	FAX
Pain Management		
SBP	(800) 995-5724	(650) 721-2884
EB	(800) 995-5724	(650) 721-2884
Perinatal Diagnostics Center		
<i>Fremont</i>	(800) 995-5724	(510) 713-9997
<i>Modesto</i>	(800) 995-5724	(209) 672-6378
<i>Mountain View</i>	(650) 988-7930	(650) 988-7859
<i>Palo Alto</i>	(800) 995-5724	(650) 725-9877
<i>Redwood City</i>	(800) 995-5724	(650) 381-3488
<i>Salinas</i>	(800) 995-5724	(831) 440-3432
<i>Santa Cruz</i>	(800) 995-5724	(831) 464-9996
Plastic Surgery		
SBP	(800) 995-5724	(650) 721-2884
SFNB	(844) 733-2762	(650) 725-7578
Psychiatry		
SBP Referral	(650) 723-5511	(650) 724-7389
SBP Consult	(800) 995-5724	
Pulmonary		
SBP	(844) 724-4140	(650) 721-2884
CC	(844) 724-4140	(650) 721-2884
SFNB	(844) 724-4140	(650) 725-7578
EB	(844) 724-4140	(925) 263-5795

	PHONE	FAX
Rehabilitation Services		
Occupational Therapy		
SBP	(800) 995-5724	(650) 721-2884
Rehabilitation Services		
Physical Therapy		
SBP	(800) 995-5724	(650) 721-2884
EB	(888) 897-3422	(650) 736-3406
Rehabilitation Services		
Speech-Language Pathology		
SBP	(800) 995-5724	(650) 721-2884
Rheumatology		
SBP	(800) 995-5724	(650) 721-2884
SFNB	(844) 733-2762	(650) 725-7578
CC	(800) 995-5724	(650) 721-2884
EB	(925) 263-5794	(925) 263-5795
Sleep Center		
SBP	(800) 995-5724	(650) 721-2884
Urology		
SBP	(800) 995-5724	(650) 721-2884
CC	(800) 995-5724	(650) 721-2884
SFNB	(844) 733-2762	(650) 725-7578
EB	(925) 263-5794	(925) 263-5795
Weight Clinic		
SBP	(800) 995-5724	(650) 721-2882



Network Locations

SBP | South Bay/Peninsula **SFNB** | San Francisco/North Bay **EB** | East Bay **CC** | Central Coast **CV** | Central Valley

Brentwood | **EB**

Stanford Medicine Children's Health
Specialty Services – Brentwood
2400 Balfour Rd, Ste 230
Brentwood, CA 94513

Capitola | **CC**

Stanford Medicine Children's Health
Specialty Services – Capitola
824 Bay Ave, Ste 70
Capitola, CA 95010

Emeryville | **EB**

Stanford Medicine Children's Health
Specialty Services – Emeryville
6121 Hollis St, Ste 2
Emeryville, CA 94608

Fremont | **EB**

Stanford Medicine Children's Health
Specialty Services – Fremont
2299 Mowry Ave, Ste 2A
Fremont, CA 94538

Livermore | **EB**

Stanford Medicine Children's Health
Specialty Services – Livermore
1134 Murrieta Blvd,
Livermore CA 04550

Los Gatos | **SBP**

Audiology – Los Gatos
14651 S Bascom Ave, Ste 112
Los Gatos, CA 95032

Pediatric Cardiology Associates –
Los Gatos
14651 S Bascom Ave, Ste 112
Los Gatos, CA 95032

Rehabilitation Services – Los Gatos
555 Knowles Dr, Ste 207
Los Gatos, CA 95032

Stanford Medicine Children's Health
Specialty Services – Los Gatos
14601 S Bascom Ave, Ste 200
Los Gatos, CA 95032

Menlo Park | **SBP**

Stanford Medicine Children's Health
Specialty Services – Menlo Park
321 Middlefield Rd
Menlo Park, CA 94025

Monterey | **CC**

Stanford Medicine Children's Health
Specialty Services – Monterey
1900 Garden Rd, Ste 130
Monterey, CA 93940

Mountain View | **SBP**

Specialty Services – Mountain View
1174 Castro St, Ste 250
Mountain View, CA 94040

Novato | **SFNB**

Stanford Medicine Children's Health
Specialty Services – Novato
101 Rowland Way, Ste 220
Novato, CA 94945

Palo Alto | **SBP**

Child and Adolescent Mental Health
401 Quarry Rd
Palo Alto, CA 94305

Children's Services – Watson Court
2452 Watson Ct
Palo Alto, CA 94303

Mary L. Johnson Specialty Services
730 Welch Rd
Palo Alto, CA 94304

Outpatient MRI Center
732 Welch Rd
Palo Alto, CA 94304

Stanford Medicine Children's Health
Specialty Services – Welch Rd
770 Welch Rd
Palo Alto, CA 94304

Pleasant Hill | **EB**

Children's Orthopedic and Sports
Medicine Center – Pleasant Hill
3480 Buskirk Avenue, Ste 125
Pleasant Hill, CA 94523

Diablo Valley Child Neurology
400 Taylor Blvd, Ste 306
Pleasant Hill, CA 94523

Pleasanton | **EB**

Stanford Medicine Children's Health
Orthopedics and Sports
Medicine – Pleasanton
5000 Pleasanton Ave, Ste 200
Pleasanton, CA 94566

San Francisco | **SFNB**

Stanford Medicine Children's Health
Specialty Services – San Francisco
1100 Van Ness Ave, 7th Floor
San Francisco, CA 94109

Sunnyvale | **SBP**

Stanford Medicine Children's Health
Specialty Services – Sunnyvale
1195 W Fremont Ave
Sunnyvale, CA 94087

Network Locations

SBP | South Bay/Peninsula **SFNB** | San Francisco/North Bay **EB** | East Bay **CC** | Central Coast **CV** | Central Valley

Salinas | **CC**

Pediatric Cardiology Associates –
Salinas
258 San Jose St, Ste A
Salinas, CA 93901

Santa Rosa | **SFNB**

SF/North Bay Pediatric Cardiology
Practice
990 Sonoma Ave, Ste 9
Santa Rosa, CA 95404

Walnut Creek | **EB**

Stanford Medicine Children's Health
Specialty Services – Walnut Creek
106 La Casa Via
Walnut Creek, CA 94598

Perinatal Diagnostic Centers

Fremont | **EB**

Perinatal Diagnostic Center – Fremont
2147 Mowry Ave
Fremont, CA 94538

Modesto | **CV**

Perinatal Diagnostic Center – Modesto
200 E Granger Ave
Modesto, CA 95350

Mountain View | **SBP**

Perinatal Diagnostic Center –
Mountain View
2495 Hospital Dr, Ste 550
Mountain View, CA 94040

Palo Alto | **SBP**

Perinatal Diagnostic Center – Palo Alto
725 Welch Rd, 3rd Floor
Palo Alto, CA 94304

Redwood City | **SBP**

Perinatal Diagnostic Center –
Redwood City
2900 Whipple Ave
Redwood City, CA 94062

Salinas | **CC**

Perinatal Diagnostic Center – Salinas
212 San Jose St
Salinas, CA 93901

Santa Cruz | **CC**

Perinatal Diagnostic Center –
Santa Cruz
1685 Commercial Way, Ste A
Santa Cruz, CA 95065

Women's Care and Obstetric Locations

Mountain View | **SBP**

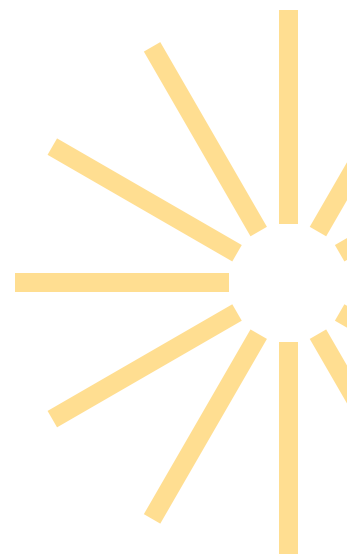
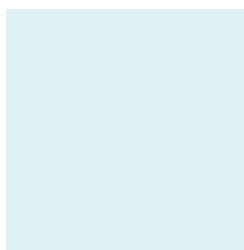
Altos Oaks Medical Group
2495 Hospital Dr, Ste 625
Mountain View, CA 94040

Palo Alto | **SBP**

Women's Health – Palo Alto
211 Quarry Rd, Ste 107
Palo Alto, CA 94304

Redwood City | **SBP**

Women's Care Medical Group
2900 Whipple Ave, Ste 135
Redwood City, CA 94062



MD Portal

What is the Stanford Medicine Children's Health MD Portal? The MD Portal gives community physicians online, password protected access to the same electronic medical record that Stanford Medicine Children's Health provider and medical staff use.

Who can get an account? Providers and support staff.

What can you do in the portal? Providers and support staff can submit and track the status of referrals.

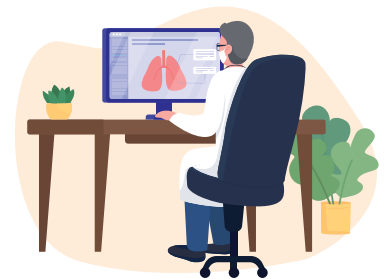
With the MD Portal you can:



Get access to the full patient chart.



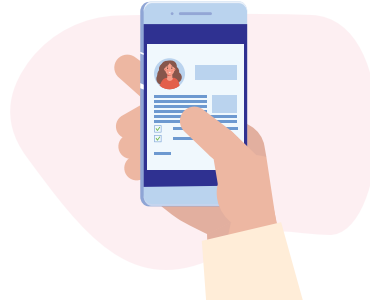
Make and track status of ambulatory referrals.



View radiology procedures (imaging).



Securely communicate with the care team.



View patient updates in real-time.

To sign up for the MD Portal, visit: mdportal.stanfordchildrens.org
Click on **Request New Account** to sign up.

